



Auto Hematology Analyzer RT-7600 *for Veterinary*

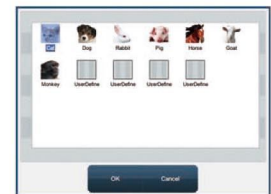
Features

- 7 pre-determined animal settings plus, 4 user-defined animal setting
- 3-part differentiation of WBC, 20 parameters+3 histograms
- High throughput, 60 samples per hour
- 10.4" TFT colorful LCD with touch screen
- External AC Adapter avoids electronic noises, enhancing accuracy
- Up to 50,000 sample results (including histograms) can be stored
- User-friendly software, Windows Operating System
- Original factory's blood control and calibrator
- Low sample & reagent consumption



Technical Specifications

Animal Type	Cat, Dog, Rabbit, Pig, Goat, Horse, Monkey plus 4 user-defined animal settings.
Parameters	WBC, LYM#, MID#, GRA#, LYM%, MID%, GRA%, RBC, HGB, MCHC, MCH, MCV, RDW-CV, RDW-SD, HCT, PLT, MPV, PDW, PCT, P-LCR and Histograms for WBC, RBC and PLT
Principle	Electrical Resistance for counting WBC, RBC and PLT
Sample Volume	Prediluted : 20ul; Whole Blood : 9.8 ul
Throughput	60 samples per hour
Display	10.4" TFT color LCD with Touch Screen
Alarms	Error messages
Input/Output	RS-232, USB, LAN, keyboard and mouse interface
Printout	Thermal printer, 55 mm width paper, various printout format, external printer (optional)
Operating Environment	Temperature : 15°C ~ 35°C; Humidity : ≤ 80%
Power Requirement	AC 110-220V, 50/60Hz
Dimension LxWxH (mm)	436 x 363 x 367
Weight	18 kg



Animal Selection



Normal Value Setting

Rayto Rayto Life and Analytical Sciences Co.,Ltd.

2nd Floor, 5th Building, Software Park, NO.2, Gaoxinzhong
3rd Road, High-tech Industrial Park, Nanshan,
Shenzhen 518057, P.R. China
Tel: +86(755)86168996 Fax: +86(755)8616879
Email: info@rayto.com Http://www.rayto.com